

Mobile Number Portability

Network Interoperability Consultative Committee,
Ofcom,
2a Southwark Bridge Road,
London,
SE1 9HA.

© 2008 Ofcom copyright

NOTICE OF COPYRIGHT AND LIABILITY

Copyright

All right, title and interest in this document are owned by Ofcom and/or the contributors to the document unless otherwise indicated (where copyright be owned or shared with a third party). Such title and interest is protected by United Kingdom copyright laws and international treaty provisions.

The contents of the document are believed to be accurate at the time of publishing, but no representation or warranty is given as to their accuracy, completeness or correctness. You may freely download, copy, store or distribute this document provided it is not modified in any way and it includes this copyright and liability statement.

You may not modify the contents of this document. You may produce a derived copyright work based on this document provided that you clearly indicate that it was created by yourself and that it was derived from this document and provided further that you ensure that any risk of confusion with this document is avoided.

Liability

Whilst every care has been taken in the preparation and publication of this document, NICC, nor any committee acting on behalf of NICC, nor any member of any of those committees, nor the companies they represent, nor any person contributing to the contents of this document (together the “Generators”) accepts liability for any loss, which may arise from reliance on the information contained in this document or any errors or omissions, typographical or otherwise in the contents.

Nothing in this document constitutes advice. Nor does the transmission, downloading or sending of this document create any contractual relationship. In particular no licence is granted under any intellectual property right (including trade and service mark rights) save for the above licence to copy, store and distribute this document and to produce derived copyright works.

The liability and responsibility for implementations based on this document rests with the implementer, and not with any of the Generators. If you implement any of the contents of this document, you agree to indemnify and hold harmless the Generators in any jurisdiction against any claims and legal proceedings alleging that the use of the contents by you or on your behalf infringes any legal right of any of the Generators or any third party.

None of the Generators accepts any liability whatsoever for any direct, indirect or consequential loss or damage arising in any way from any use of or reliance on the contents of this document for any purpose.

If you have any comments concerning the accuracy of the contents of this document, please write to:

The Technical Secretary,
Network Interoperability Consultative Committee,
Ofcom,
2a Southwark Bridge Road,
London SE1 9HA.

Contents

Intellectual Property Rights	4
Foreword	4
Introduction	4
1 Scope	5
2 References	6
2.1 Normative references	6
3 Definitions, symbols and abbreviations	6
3.1 Definitions	6
3.2 Abbreviations	7
4 Service Description - Mobile Number Portability	8
5 MNP Solution – Signalling Relay Function	8
5.1 Background – Mobile terminated calls	8
5.2 Signalling relay principle	9
5.3 Exception handling for circuit-switched calls	10
6 MNP Interface Requirements	13
6.1 Network Interfaces	13
6.2 Signalling Interfaces	14
6.2.1 Signalling operations affected by MNP	14
6.2.2 MTP Addressing	14
6.2.3 SCCP Addressing	14
6.2.4 SCCP Number Plan for Signal Relaying	15
6.2.5 IRN number plan for circuit switched call handling	15
6.3 Requirements on Qualifying Networks	16
6.3.1 Originating network requirements	16
6.3.2 Range Holding network requirements	16
6.3.3 Recipient network requirements	16
6.3.4 Transit network requirements	17
6.4 Requirements on SRF	17
6.5 Requirements on GMSC	18
7 Call Flows	19
7.1 Voice call: basic signalling relay operation	19
7.2 Call to Ported number via Range holder	20
7.3 Optimal routeing	20
7.4 Mobile originated call	21
7.5 SMS Delivery	22
7.6 SMS Message Waiting	23
7.7 CCBS	24
7.8 Send IMSI	25
8 Service Interactions	26
8.1 Line identity presentation services	26
8.2 Emergency calls	26
8.3 CAMEL	26
8.4 Echo cancellers	26
9 Call Trap	26
10 Error Handling	26
10.1 MTP/SCCP/TC errors	26
10.2 Unsuccessful call completion or application errors	27
History	28

Intellectual Property Rights

Pursuant to the NICC IPR Policy, no investigation, including IPR searches, has been carried out by NICC. No guarantee can be given as to the existence of other IPRs which are, or may be, or may become, essential to the present document.

Foreword

This NICC Document (ND) has been produced by NICC Naming Numbering and Addressing Working Group

Introduction

In November 2007 Ofcom published a Statement entitled “Telephone number portability for consumers switching suppliers” – “Concluding Statement”. In that statement Ofcom issued a Notification of modifications to General Condition 18. In that modification Communications Providers are required to establish a “Common Database” for the purposes of Number Portability. The present document sets out how Mobile Number Portability will be accomplished, utilising the Common Database which is defined in NICC document ND1631 [4].

1 Scope

A feasibility study on Mobile Number Portability (MNP) [1] produced by the UK telecommunications industry concluded that of the proposed technical solutions the method based on Signalling Relay Functionality (SRF) was preferred for the UK. This is a non-circuit related signalling technique and is a different approach to that taken for fixed number portability.

Subsequently the UK Regulator placed requirements on all Operators using Mobile Numbers to route traffic between UK Operators without the involvement of the Range Holding network. See reference [4].

The purpose of this document is to describe the operation of UK MNP based on a SRF implementation.

This service description places requirements on participating MNP originating, transit and recipient networks. The service description does not place any requirements on the implementation adopted within a participating MNP network except to the extent that the implementation supports the requirements of the interconnect.

The MNP service covers numbers allocated to GSM 900, GSM 1800 and, 3G UMTS network operators as well as the numbers allocated to MVNOs, WiFi providers and DECT guard-band communications providers.

The MNP service description in this document is only applicable to GSM and UMTS networks, not WiFi networks.

Items not covered by this service description are:

- Billing and administration system requirements
- Porting process requirements
- CDR transfer process requirements
- Roaming information transfer requirements
- Downloading porting information from the CDB.

This service description deals only with mobile terminating transactions. This is because mobile originated transactions initiated by the ported subscriber do not involve the ported number.

This service description does not deal with transactions based on International Mobile Subscriber Identities (IMSI) since IMSIs are not ported and once allocated by the Recipient network operate as normal. An example IMSI based transaction is Location Updating.

This service description describes a model for the implementation of MNP using generic terms to denote functionality in Qualifying Networks in order to ease understanding.

The implementation of functional entities described in section 5 of this document is a matter for the Qualifying Networks and is not mandated.

2 References

2.1 Normative references

The following referenced documents are indispensable for the application of this document. For dated references, only the edition cited applies. For non-specific references, the latest edition of the referenced document (including any amendments) applies.

- [1] MNPTG CP(97)022 MNPTG Interim Report Issue 1, MNPTG.
- [2] ND1107:2001/10 PNO ISC/INFO/007 - UK Interconnect Use of SCCP
- [3] The National Telephony Numbering Scheme (<http://www.ofcom.org.uk/telecoms/ioi/numbers/>)
- [4] Telephone Number portability for consumers switching suppliers (concluding statement) OFCOM November 29th 2007.
- [5] ND1631 - NGN; PSTN/ISDN Service Interconnect; Architecture for usage of Common Numbering Database

3 Definitions, symbols and abbreviations

3.1 Definitions

For the purposes of the present document, the following terms and definitions apply:

Destination Group : Prefix format used in the CDB to indicate termination point for a number [5]

Donor network : The network losing the terminating customer and ported directory number in the Porting process.

Global Title : A form of SCCP addressing.

Intermediate Routeing Number : A number used to force a ported call into the recipient network for call processing treatment. This number is conveyed in the MSRN field within the MAP layer.

Interrogating Network : Network that interrogates the SRF to determine the routeing of a Call or message

MNP Solution : Standard method by which the UK industry manages and operates services for mobile subscriptions with ported numbers.

Native number : A number inside the NNG range allocated to the operator from Ofcom

Originating network : The network originating a call or service request.

Ported Call : A call to a ported number.

Porting data : The data in the network responsible for routeing signals to the appropriate recipient network.

Ported Number : The directory number originally allocated by the Range Holding network to the ported subscriber.

Porting process : The process of moving a number from the donor network/SP to the recipient network/SP.

Qualifying Network : A network that has requested portability from another network and is able to provide portability to that network.

Range Holding network : The holder of the NNG range to which a ported directory number belongs

Recipient network : The network receiving a new subscription with a ported number.

Service Provider : The entity contracted to provide retail air time to the subscriber.

Subscriber : User of a mobile phone responsible for payment of the subscription account.

3.2 Abbreviations

For the purposes of the present document, the following abbreviations apply:

A Party	Calling party
B Party	Called party
CAMEL	Customised Applications for Mobile network Enhanced Logic
CCBS	Completion of Calls to Busy Subscribers
CDB	Central Database
CDR	Call Detail Record
CdPA	SCCP Called Party Address
CgPA	SCCP Calling Party Address
CND	Calling Number Display
DECT	Digital Enhanced Cordless Telecommunications
GMSC	Gateway MSC
HLR	Home Location Register
IMSI	International Mobile Subscriber Identity
IRN	Intermediate Routeing Number
MAP	Mobile Application Part
MNP	Mobile Number Portability
MRC	MNP Rerouteing Code
MSISDN	Mobile Subscriber ISDN Number
MSRN	Mobile Subscriber Roaming Number
MVNO	Mobile Virtual Network Provider
NICC	Network Interoperability Consultative Committee
NNG	National Number Group
OR	Optimal Routeing
SCCP	Signalling Connection Control Part
SIM	Subscriber Identity Module
SMS	Short Message Service
SRF	Signalling Relay Function
SRI	MAP Send Routeing Information
SRI-SM	MAP Send Routeing Information for Short Message
TSG	Technical Steering Group
UMTS	Universal Mobile Telecommunications System
WiFi	Wireless Fidelity

4 Service Description - Mobile Number Portability

MNP is the ability for a mobile subscriber to change network operator whilst retaining their original directory number for each service used in the new network. The move may, or may not, include a change in service provider.

MNP is not service portability, i.e. if a service supported in the old network is not available on the new network then number porting mechanisms will not provide that service for the porting subscriber.

Number porting involving GSM or UMTS subscriptions does not include porting the IMSI. When porting to a GSM or UMTS subscription a new SIM and IMSI are provided by the recipient network.

The service described in this specification relies on the SRF which is populated with data regarding ported numbers. This is usually populated with data on exported and imported numbers for the CP's own network. Where the functionality to implement the regulations in reference [4] is enabled, the SRF will be augmented with the other porting information; this will be derived from information held in the UK Porting database. See ND1631 [5] for details of the CDB. The decision to use either the per event interface or to use a local copy derived from the CDB is for the network operator and is outside the scope of this specification. The decision to store all numbers or only ported numbers in any network operator local copy is for the network operator.

5 MNP Solution – Signalling Relay Function

This section uses generic terms to denote functionality in Qualifying Networks. The implementation of functional entities described in this section is a matter for the Qualifying Networks in order to meet the MNP Interface requirements in section 7.

5.1 Background – Mobile terminated calls

In mobile networks, calls cannot be delivered to mobile subscribers simply by means of analysing the digits dialled because the mobile can be anywhere in the mobile network or even roaming. To deliver a call a Routeing Enquiry is made to a Home Location Register (HLR) to determine where the called subscriber is located and to obtain a routeing number, see Figure 1. The Routeing Enquiry is a C7 based signal. The routeing number is temporarily allocated to the called subscriber and relates to the visited switch.

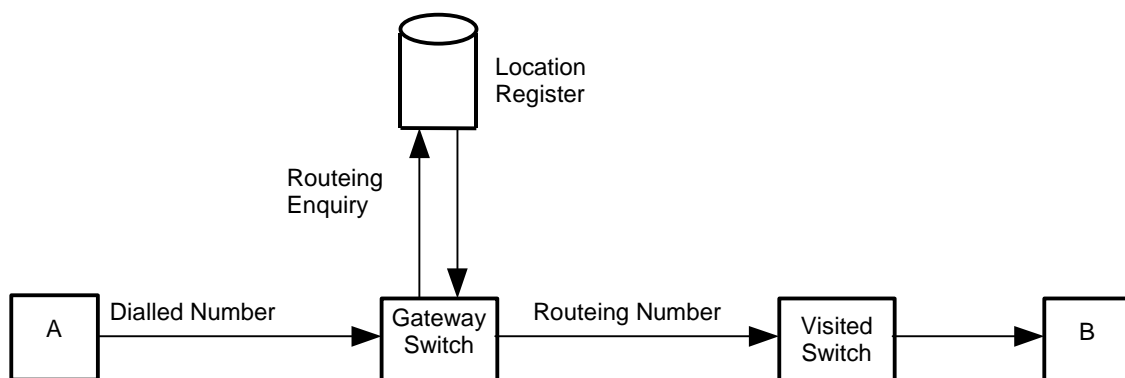


Figure 1 - Generic Mobile Terminated Call.

5.2 Signalling relay principle

The signalling relay principle takes advantage of the routing enquiry signal to provide number portability. The principle is that the Interrogating Network sends the routing enquiry signal or other signal addressed to a ported number to the appropriate recipient network for treatment, see Figures 2, 3, 4 and 5. In this way the recipient network can provide the routing number or other result to complete the routing of the call or transaction.

Note : The figures below are largely logical diagrams only showing the source and the destination of signals not the physical path. Detailed call flows are given in Section 7.

A Signalling Relay Function (SRF) is required in the Interrogating mobile network to provide this functionality. The SRF shall include the functionality to:

1. Determine for which directory numbers relaying is applicable
2. Determine to which network relaying should be directed
3. Modify SCCP addressing to relay signals to the recipient network

The SRF is provisioned with at least the MSISDNs exported from the Rangeholder.

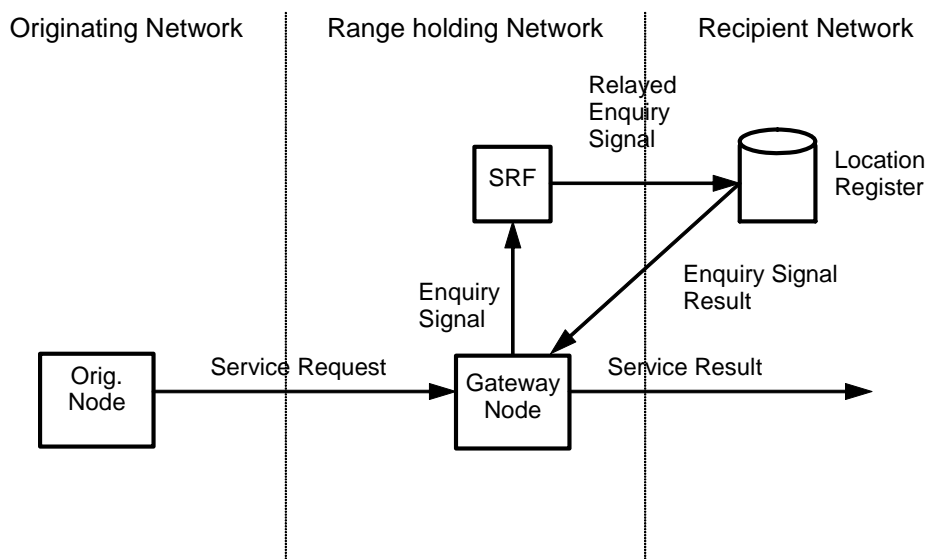


Figure 2 - Signaling Relay Operation - Circuit Related Call routing enquiry

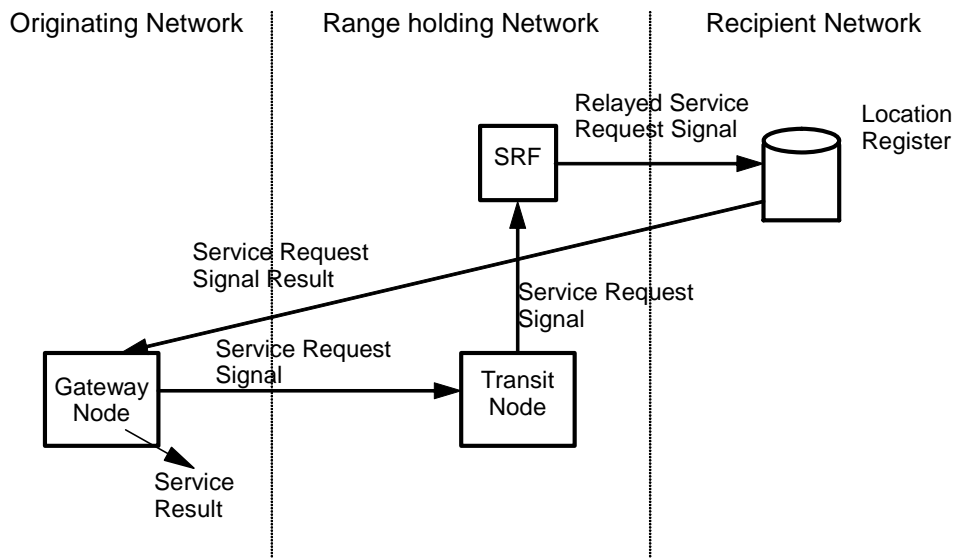


Figure 3 - Signaling Relay Operation - Signals other than circuit related call routing enquiries

5.3 Exception handling for circuit-switched calls

Call handling is achieved by sending an Intermediate Routing Number to the gateway node in the Interrogating network, as before, except that the SRF generates the enquiry result rather than the recipient network, see Figure 5. Once in the Recipient network, the call enters the standard routing enquiry stage.

This exception handling is only applicable to routing enquiries for circuit related calls. All other signals are relayed to the recipient location register function.

Figure 4 below shows the action of the handling for routing enquiries for circuit related calls that have entered the Range holding network operator from a network that does not implement direct routing and hence not compliant to reference [4]

Figure 5 below shows the handling of routing enquires for circuit related calls from a network following the 'Direct Routing' principle required in reference [4].

Figures 6 and 7 below shows the action for the routing of signals other than routing enquiries for circuit related calls for the Rangeholder and Direct Routing cases respectively.

Note : The figures below are logical diagrams only showing the source and the destination of signals not the physical path. The numbers on each signal indicate the sequence of signals.

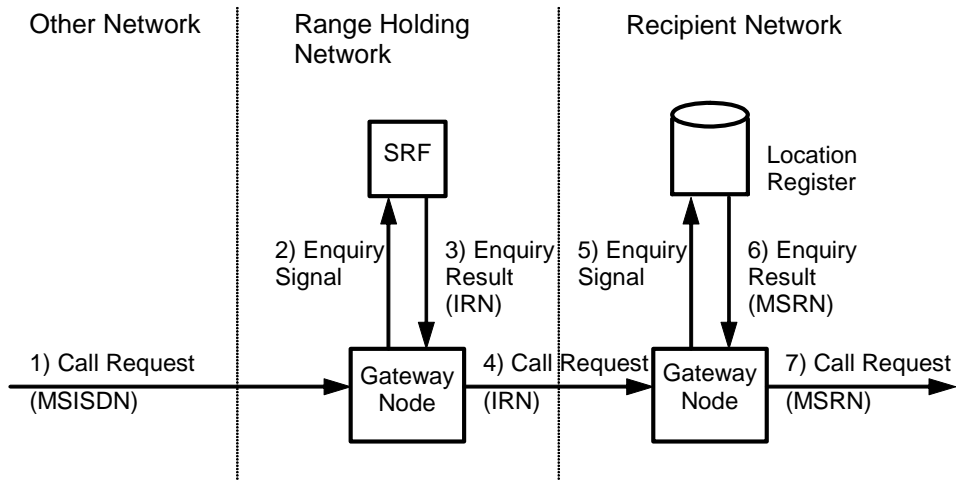


Figure 4 - Call Routed via range holder

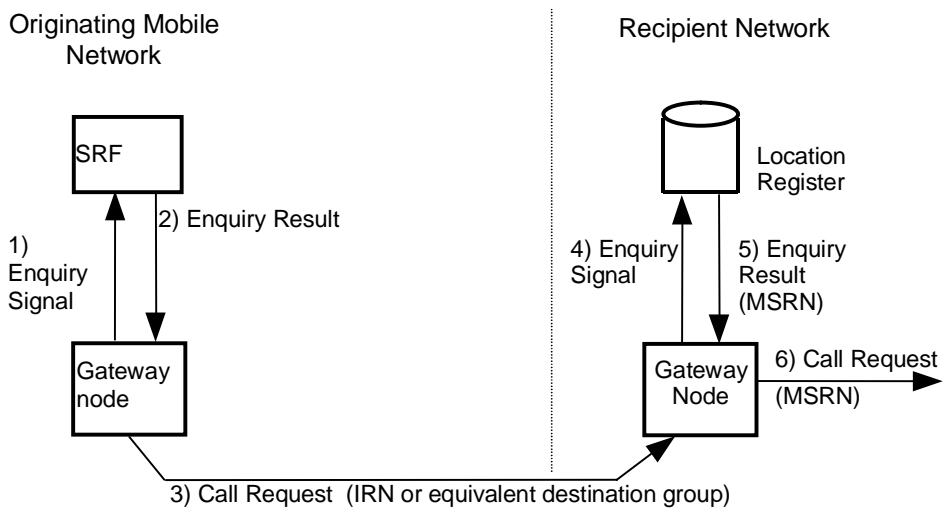


Figure 5 – Call routed directly

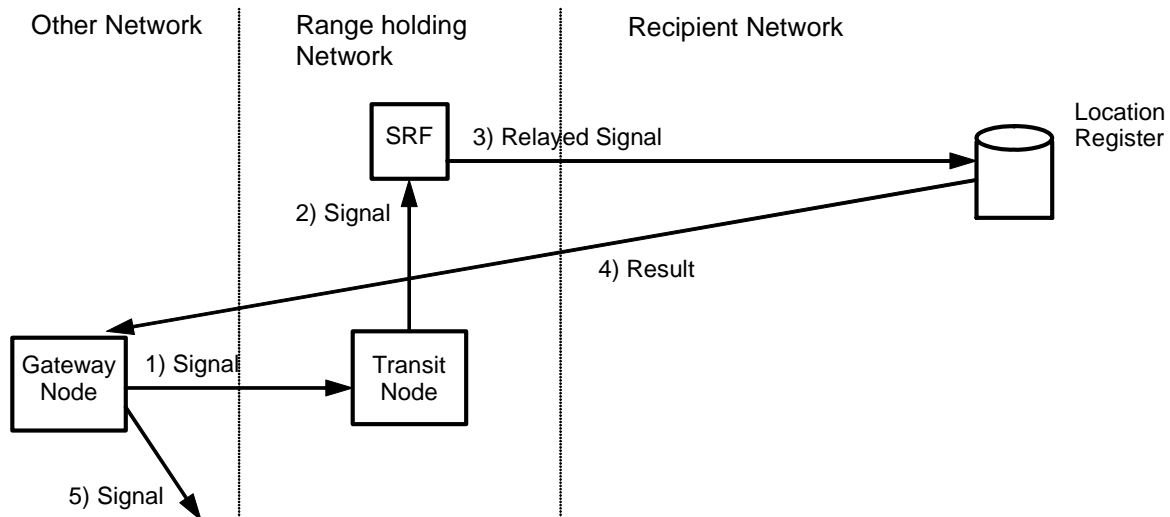


Figure 6 - Signals other than circuit related routing enquiries indirectly routed

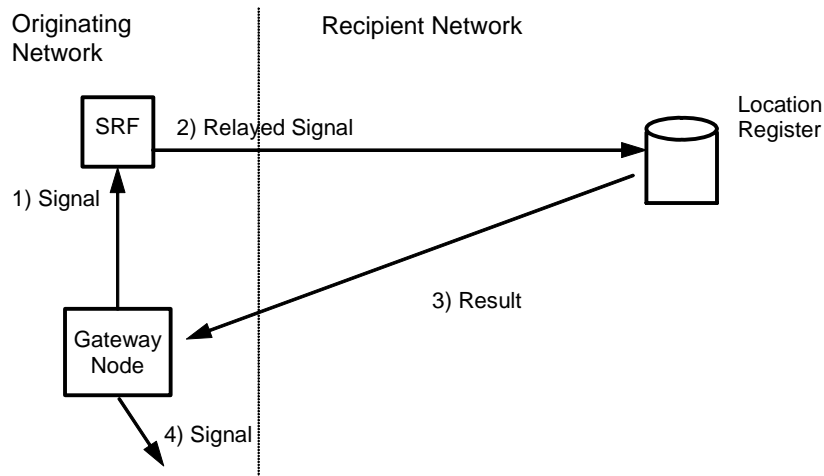


Figure 7 - Signals other than circuit related routing enquiries directly routed.

Functionality is required in the Interrogating network to invoke circuit switched call handling at the appropriate times. The Interrogating network contains:

1. proprietary criteria defined by the Interrogating network for invoke proper call handling
2. functionality to determine which signals are applicable.
3. functionality to return an IRN for signals which are applicable.
4. Signalling Relay Functionality for signals which must be sent to the Recipient network.

For interrogating networks compliant to [4], the result of the enquiry signal will always be an IRN number. The IRN will be then used by the Interrogating mobile network to route to the Recipient network. The IRN may be translated to another format (for example – the Destination Group of the Recipient network) according to the relevant interconnect agreements for routing the call to the Recipient network. If the Interrogating network is the Recipient network for the terminating number, the call is handled in a manner determined by the network. This is outside the scope of this specification.

6 MNP Interface Requirements

This section defines the MNP interface between Qualifying Networks and is a mandatory requirement for MNP.

6.1 Network Interfaces

A ported call uses a dialled directory number from the number range of a network but the call must be delivered to the Recipient network of the called subscriber. To support this requirement an MNP interface is required between the Interrogating and Recipient network. The interface may be direct or indirect (via a transit operator), therefore the mandatory requirements of the interface must be supported by Originating, Interrogating, Recipient and Transit networks, see Figure 8.

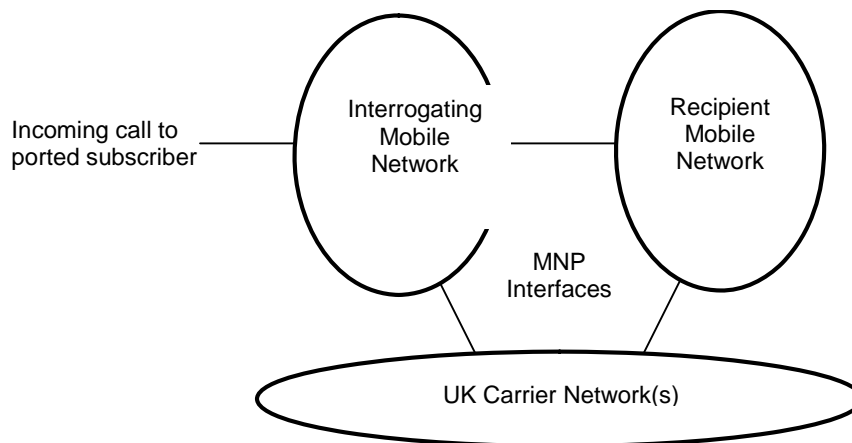


Figure 8 - MNP Interfaces.

6.2 Signalling Interfaces

6.2.1 Signalling operations affected by MNP

The signalling systems operating across the MNP interconnect shall be the C7 based Mobile Application Part and ISDN Supplementary Services ASEs as applicable. These application parts shall be supported by the C7 signalling layers, MTP, SCCP and TCAP.

The operations affected by MNP are those addressed at the SCCP layer on the MSISDN of a ported subscriber. The current standardised messages routed on MSISDN are shown in the table below:

Table 6.2.1.a - Operations subject to the MNP SRF

Operation	Name	Protocol	Exception handling applicable
sendRouteingInformation	SRI	MAP	Yes
sendRouteingInformation (OR)	SRI(with OR parameters)	MAP	No (NOTE)
sendRouteingInfoForSM	SRI-SM	MAP	No
setMessageWaitingData	SMWD	MAP	No
reportSM-DeliveryStatus	Report SM Delivery Status	MAP	No
CcbsRequest	CCBS Request	CCBS ASE	No
CcbsSuspension	CCBS Suspension	CCBS ASE	No
CcbsResume	CCBS Resume	CCBS ASE	No
CcbsCancel	CCBS Cancel	CCBS ASE	No
Other MSISDN based non circuit related signals destined for the HLR as defined by 3GPP	As defined in 3GPP TS29.002	MAP	No

NOTE: If optimal routeing is not allowed, the Recipient network may either return an 'OR not allowed' error (in which case the call will be routed to the Range holding network) or (preferably) return an IRN in the MSRN field of the acknowledgement, thus causing the call to be routed directly to the recipient network. In order to allow OR the Range holding network should relay SRIs transparently to the recipient network.

Version differences of MAP operation shall be dealt with by MAP version negotiation mechanisms between the Interrogating node and the HLR (Recipient network). Since the SRF and the circuit switched interrogating node are in the same network the SRF shall recognise the SRI for circuit switched calls and handle it according to this specification.

6.2.2 MTP Addressing

Non circuit related messages routed from the interrogating network to Recipient networks should be addressed to a node which will perform Global Title Translation to determine the final destination of the message. In this way Interrogating networks will not require knowledge of all Recipient network HLRs.

6.2.3 SCCP Addressing

MAP operations are routed on Global Title in the SCCP layer. A re-routeing code is required to relay the signal to the recipient network. This is inserted by the Interrogating network from the ported subscribers provisioned data. The SCCP Called Party Address is the modified field.

A standard signalling re-routeing number plan is required for SCCP interconnect to allow signal relaying, see following section. Where interconnect is achieved through transit networks the transit network is required to support the signalling re-routeing number plan. The addressing of SCCP messages between the Interrogating and recipient networks is as follows (please refer to [2] for details of SCCP parameters):

Table 6.2.3.a - MNP SCCP Addressing

Protocol Layer	Field	Number
MAP	MSISDN	7abc SN 447abc SN
SCCP	CdPA Address Indicator	RI=GT, GTI=0100, SSNI =1, PCI=0
SCCP	CdPA	SSN=6 (HLR) or 11 (ISDN ASE) TT=0, NPI=E164, NAI=International, GT=447XYZ abc SN
SCCP	CgPA	Originating Node Address

Responses to the relayed operations are addressed in the standard way using the received calling party address.

6.2.4 SCCP Number Plan for Signal Relaying

The SCCP MNP re-routeing number is defined as follows:

Table 6.2.4.a - MNP SCCP Called Party Address format

CC	MRC	abc	SN
----	-----	-----	----

Digit	Name	Value
CC	Country Code	44
MRC (NOTE 1)	MNP Re-routeing Code	7XYZ
Abc (NOTE 2)	NNG	ported number nng
SN	Subscriber Number	ported number

NOTE 1: The value of 'XYZ' is administered by Ofcom. For individual MRCs allocated to each mobile network operators, please refer to The National Telephony Numbering Scheme [3]

NOTE 2: The NNG will exclude the leading (mobile) service digit 7.

The Interrogating network shall ensure that the above addressing format is provided at interconnect interfaces.

6.2.5 IRN number plan for circuit switched call handling

The IRN is used for routeing circuit switched calls from the Interrogating network to the Recipient network. At the Interrogating network it is carried in the MSRN field of the appropriate SRI response MAP message from the SRF to the Interrogating MSC. The format is the same as that described in Table 6.2.4.a above.

The IRN, when used in interconnect circuit-related signalling shall form of the called party address that is suited to the signalling system used on the interconnect, for example “07XYZ abc 123456”. The destination number used in interconnect circuit related signalling may also be formatted differently according to the relevant interconnect arrangements. The reasons for choosing one format or the other is outside the scope of this Specification.

Because the CDB lists the porting information using the Destination group and MNP needs IRNs for signalling and circuit switched call purposes CPs will need to translate between the two forms. Therefore for ease of translation there shall be a special range of Destination Groups that embed IRNs. The details of the Destination groups are described in ND 1631 Annex B [5].

6.3 Requirements on Qualifying Networks

6.3.1 Originating network requirements

Originating mobile networks compliant with [4] hence following the ‘Direct Routeing’ method, following an SRI enquiry to the SRF, shall route circuit switched calls directly from the Originating mobile network towards the Recipient network (or Range Holding network where the number isn’t ported) using the MNP IRN numbering plan specified in section 6.2.5 and relay other non circuit related signals addressed to a ported number as illustrated in section 6.2.1 towards the Recipient network using the MNP SCCP numbering plan specified in sections 6.2.3 and 6.2.4.

Where the Originating network is not a mobile network compliant with [4] it shall either route circuit switched calls to the Range Holding network using the MSISDN, or following a query to the Common Numbering Database (see [5]), route to the Recipient network using the Destination Group.

Note : IRN format may be used if agreed by all parties in the call path.

Non circuit related signalling shall be routed to the Range holder using the MSISDN or to the Recipient network using the IRN according to whether the Originating network is compliant with [4].

6.3.2 Range Holding network requirements

Range Holding networks shall :

Relay all non circuit related routeing enquiry signals and other signals addressed to a ported number as illustrated in section 6.2.1 towards the Recipient network using the MNP SCCP numbering plan specified in sections 6.2.3 and 6.2.4.

and

Route circuit switched calls arriving in the Range Holding network towards the Recipient network using the MNP IRN numbering plan specified in section 6.2.5

For non ported numbers, the network shall receive incoming calls and messages using either the MSISDN or IRN in the SCCP Global Title (for non circuit related services) or the Called party in ISUP signalling (for circuit switched calls).

Note : For non ported numbers where the Originating network is compliant with [4], calls will be received in IRN form where both the MRC and embedded NNG relate to the Range Holding network.

6.3.3 Recipient network requirements

In cases where the originating network is not compliant to [4], the recipient network shall receive incoming calls and messages for imported numbers using the IRN in the appropriate signalling fields.

In cases where the originating network is compliant to [4], the recipient network shall receive incoming calls and messages for imported and non ported numbers using the IRN (or equivalent destination group) in the appropriate signalling fields. For ported numbers this will be using IRN or equivalent Destination Group. For non-porting numbers this will be using the IRN, equivalent Destination Group or 7200000 prefix.

- The call shall never be routed out of the recipient network using porting codes. This is to prevent calls endlessly being routed between networks if the SRF data in different networks are not in step. Where a call is received with the Recipient network's IRN (or equivalent destination group) but the number is not hosted on the Recipient network, the call shall be failed.
- No signalling message received using the IRN as SCCP Global Title should be rerouted. This is to prevent messages being routed endlessly between networks. Where a message is received with the Recipient network's IRN but the number is not hosted on the Recipient network, the message shall be rejected.

6.3.4 Transit network requirements

Networks providing SCCP transit functionality between Interrogating and Recipient networks are required to support the MNP re-routeing numbering plan defined in section 6.2.3 and 6.2.4

Networks providing call routing between Qualifying Networks shall support routing of IRN numbers defined in section 6.2.5. Circuit switched calls may also be routed between the Interrogating network and the Recipient network using the Destination Group or any other agreed called party address. However, this is the subject of commercial negotiation and therefore outside the scope of this specification.

6.4 Requirements on SRF

The table below shows the SRF actions on receiving SRI from GMSC (or GMSC type interrogating node) and a non call related message (eg. SRI for SMS from an SMS – SC)

Table 6.4.a SRF requirements

	SRI for Circuit switch calls (eg. Voice) from own GMSC	Non circuit related signalling
Non-Ported MSISDN in own network number range	Route SRI to HLR	Route to HLR
Ported In MSISDN	Route SRI to HLR	Route to HLR
Ported Out MSISDN	Return IRN of recipient network as MSRN in SRI	Route to Recipient Network (NOTE 1)
MSISDN on another network as downloaded from the CDB.	Return IRN of recipient network as MSRN in SRI response.	Route to Recipient Network (NOTE 1)
MSISDN without individual entry in SRF in own network number range (NOTE 2)	Route SRI to HLR	Route to HLR
MSISDN without individual entry in SRF in another network's number range (therefore not ported as shown in the CDB) (NOTE 2)	Return IRN of terminating network as MSRN in SRI response.	Route to terminating Network (NOTE 1)

NOTE 1 - if the incoming signal had Called party address GT=IRN the signal shall not be routed. This is to prevent messages being routed endlessly in loops due to data mismatches in different networks.

NOTE 2 – This case is identified by the range in which the called MSISDN resides rather than an individual entry.

6.5 Requirements on GMSC

For voice and circuit switched calls the interrogation of the SRF is carried out either in the Originating network or the Range holding network. The actions required are described in the following table.

Table 6.5.a GMSC requirements

	Terminating number is owned by interrogating network and SRI result is a real MSRN	Terminating number is not owned by interrogating network and SRI result is an IRN (in the MSRN field of the SRI response) when CDB operates	Terminating number is not owned by interrogating network and Result when CDB does not operate.
Mobile originating call to UK MSISDN.	Route according to MSRN	Route to Recipient operator using the IRN	Route to Recipient operator using the IRN (for ported numbers) or to range holder using the MSISDN (for numbers unknown to the operator)
Call from another network to an MSISDN in Network's own range (no IRN or Destination Group)	Route according to MSRN	Route to Recipient operator using the IRN (ported out number call case)	Route to Recipient operator using the IRN for exported numbers (ported out number call case)
Call from another network using own network's IRN or Destination Group.	Route according to MSRN	Do not route as this situation represents a mismatch of provisioned porting information between SRFs!	Do not route as this situation represents a mismatch of provisioned porting information between SRFs!

7 Call Flows

The diagrams in the following sections describe only the relevant nodes, Messages and Parameters at the various protocol layers for each scenario.

7.1 Voice call: basic signalling relay operation

The following call flow is included for information to illustrate the handling of a non ported number with the SRF in operation in the Range Holding network. For this example, the Originating network is not a Qualifying network compliant with [4].

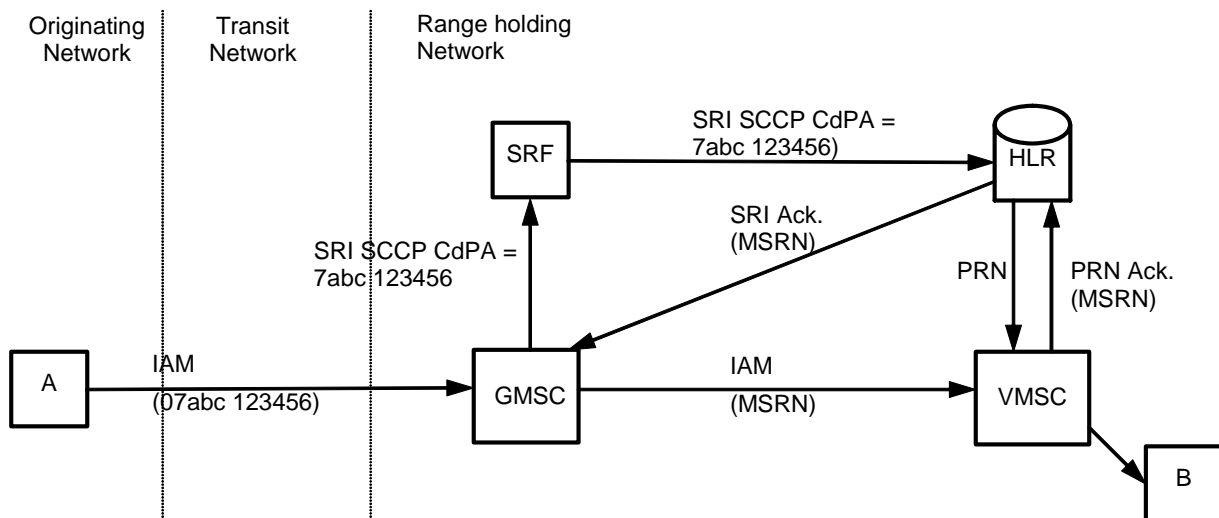


Figure 9 - Signalling Relay Operation - Non Ported Number

7.2 Call to Ported number via Range holder

The following call flow illustrates the handling of a ported number with the SRF in operation in the Range Holding network. For this example, the Originating network is not a Qualifying network compliant with [4].

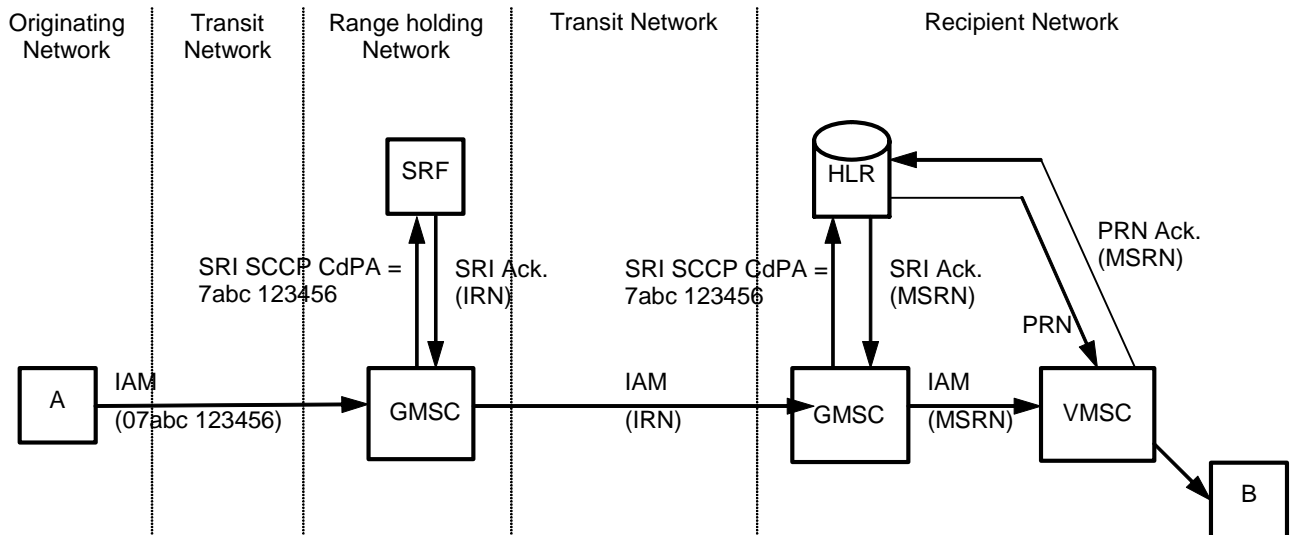


Figure 10 – Call to ported number via Range Holder.

7.3 Optimal routing

The following message flow illustrates the handling of a circuit switched call to a roaming handset with the SRF in operation in the Range Holding network. For this example, the Originating network is not a Qualifying network compliant with [4].

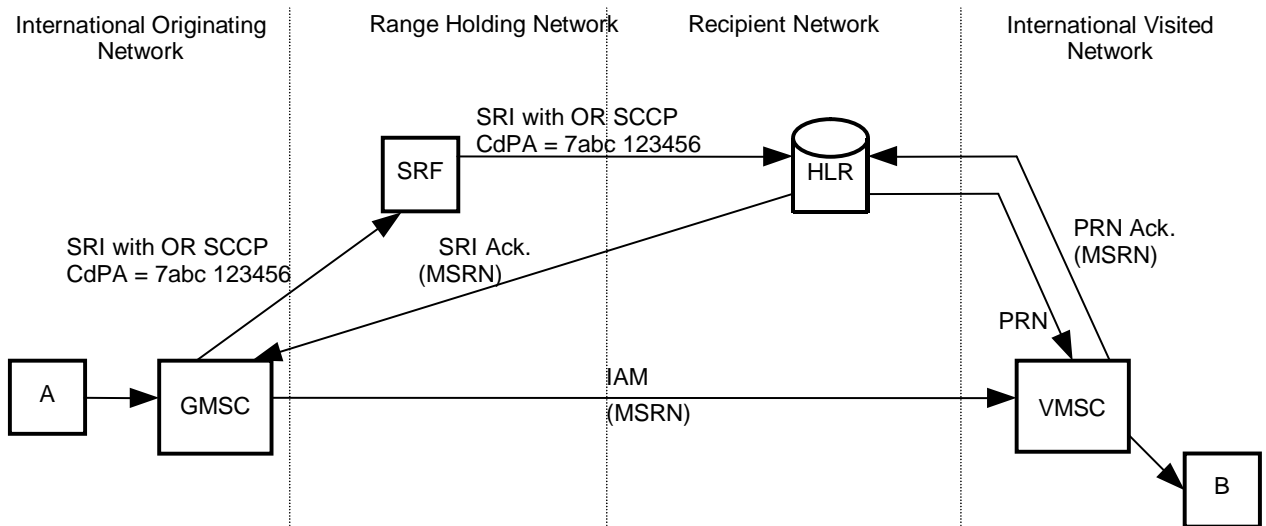


Figure 11 – Signalling Relay Interaction with Optimal Routing

7.4 Mobile originated call

The requirement to deliver circuit related calls directly from the Originating mobile operator to the Recipient mobile operator (that may be the same network) whether the MSISDN dialled is ported or not is shown below. This means that the call would not pass through the Range Holding network.

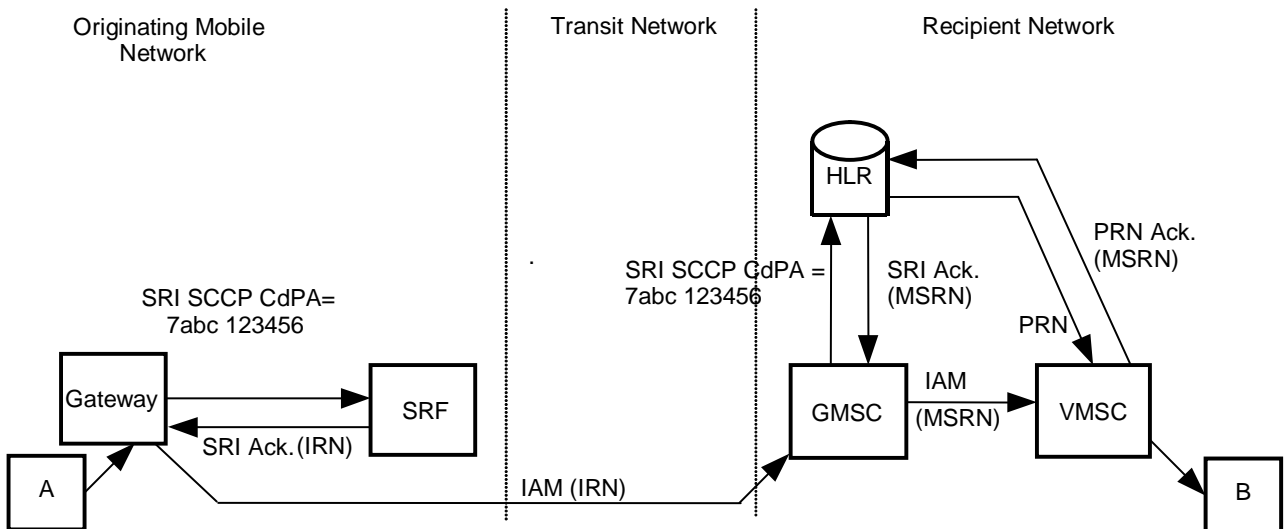


Figure 12 – Mobile Originated call

7.5 SMS Delivery

In order to illustrate the most complex scenario conceivable, the message flow below assumes that SMS conveyance is in operation between the Originating and Range holding networks. Figure 13 illustrates the case where the Originating network is not a Qualifying network compliant with [4], while Figure 14 illustrates the case where the Originating network is compliant with [4].

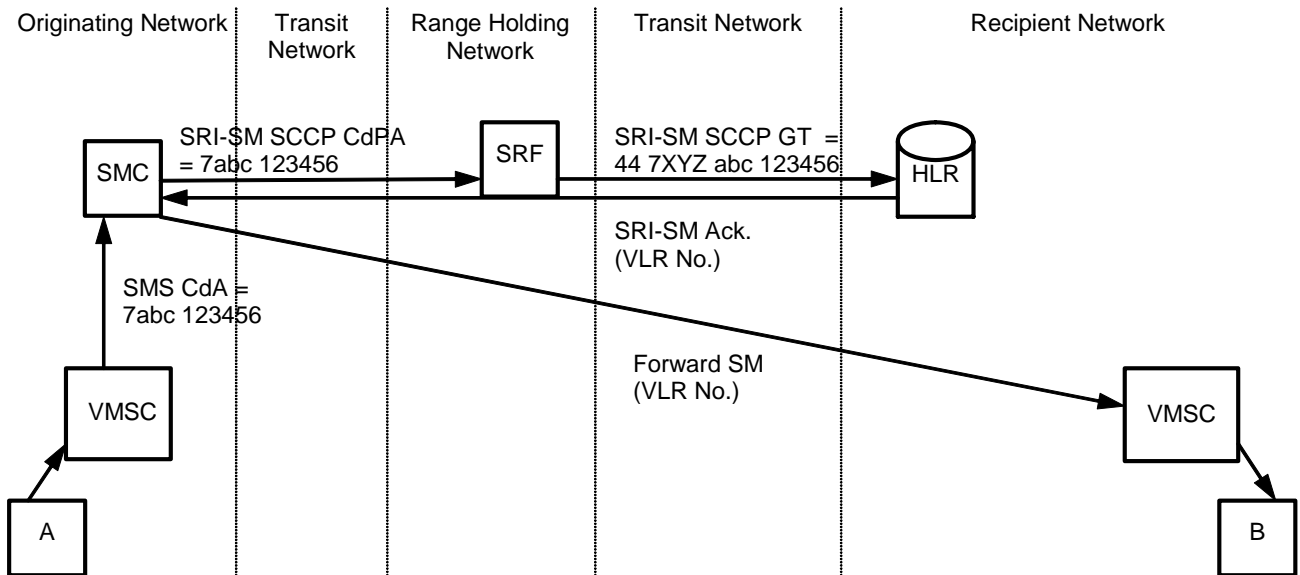


Figure 13 – SMS using range holder

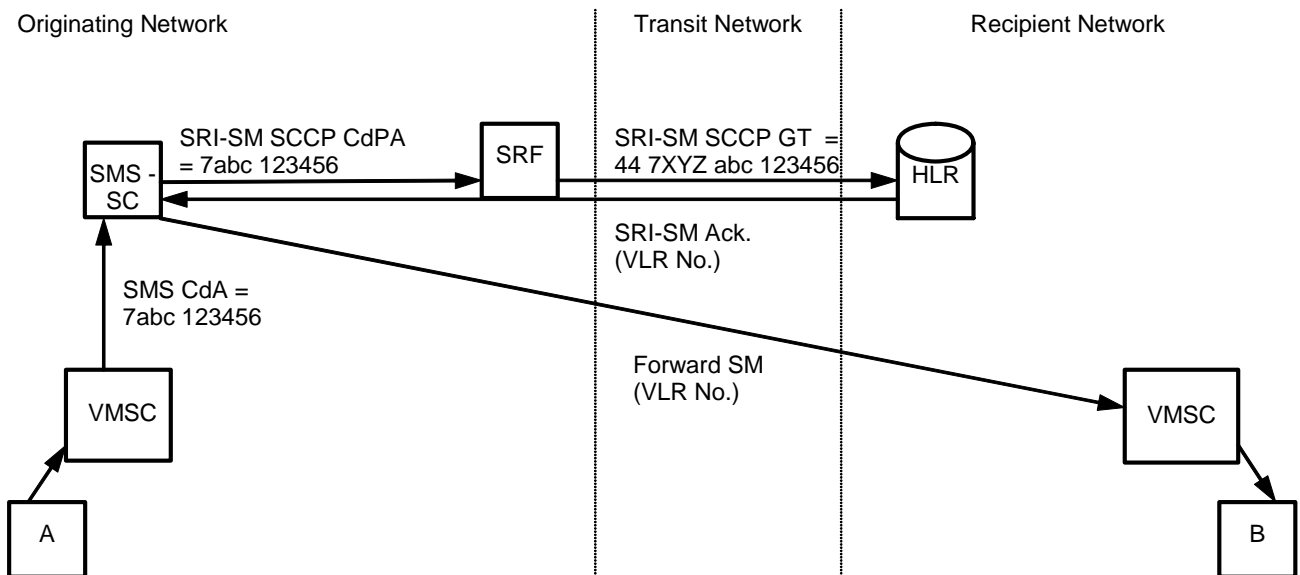


Figure 14 - SMS direct routing

7.6 SMS Message Waiting

In order to illustrate the most complex scenario conceivable, the message flow below assumes that SMS conveyance is in operation between the Originating and Range Holding networks. Figure 15 illustrates the case where the Originating network is not a Qualifying network compliant with [4], while Figure 16 illustrates the case where the Originating network is compliant with [4].

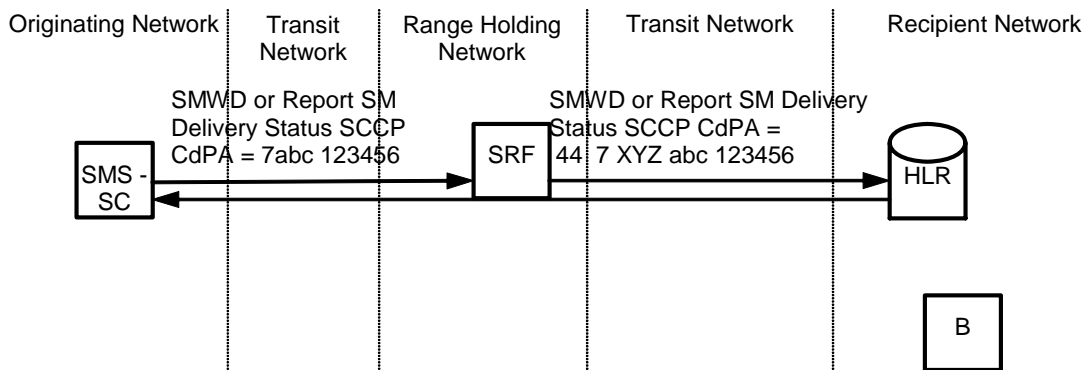


Figure 15 – SMS set message waiting using range holding network

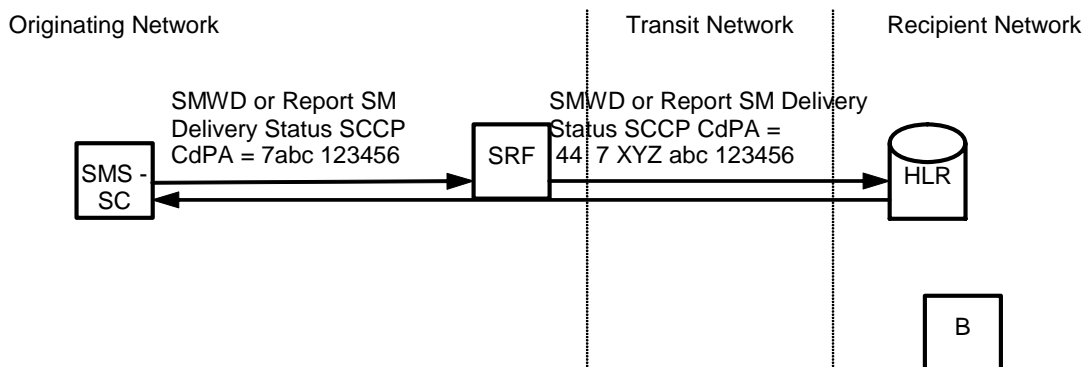


Figure 16 – SMS set message waiting direct routing

7.7 CCBS

The Activation, Suspension and Resume signals which are transferred from the Originating side to the Recipient network are relayed by the SRF. The Remote User Free signal, which is transferred in the opposite direction, is sent direct from Recipient to Originating networks using the C7 SCCP calling party address provided earlier. The final CCBS call is handled as another ported call.

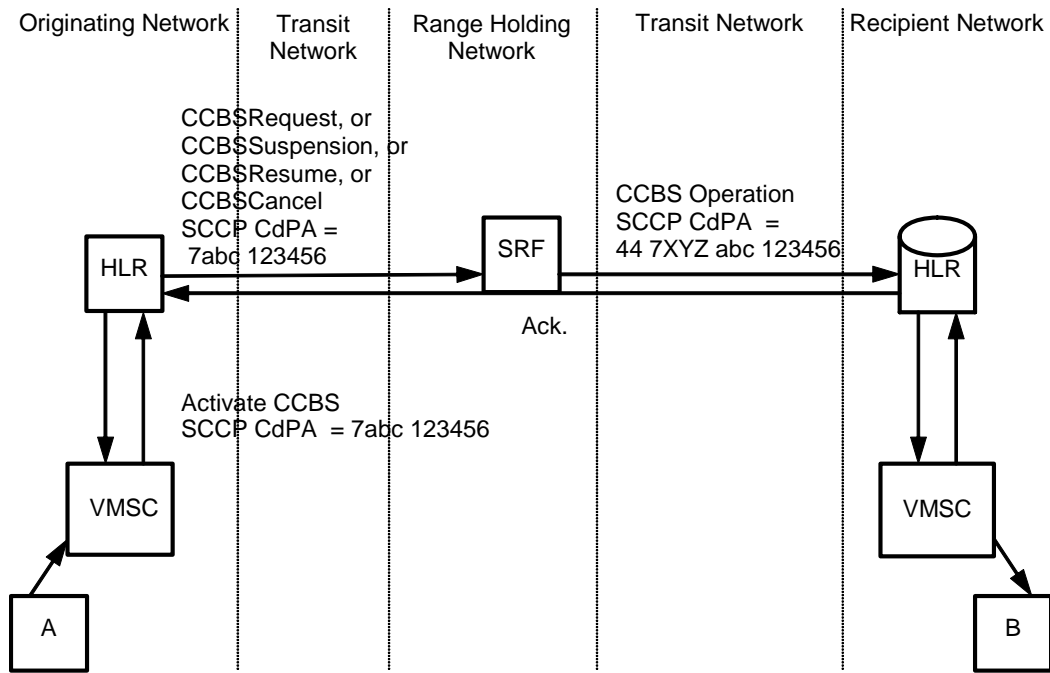


Figure 17 – Activation/Suspension/Resume/Cancel CCBS on ported subscriber via range holder

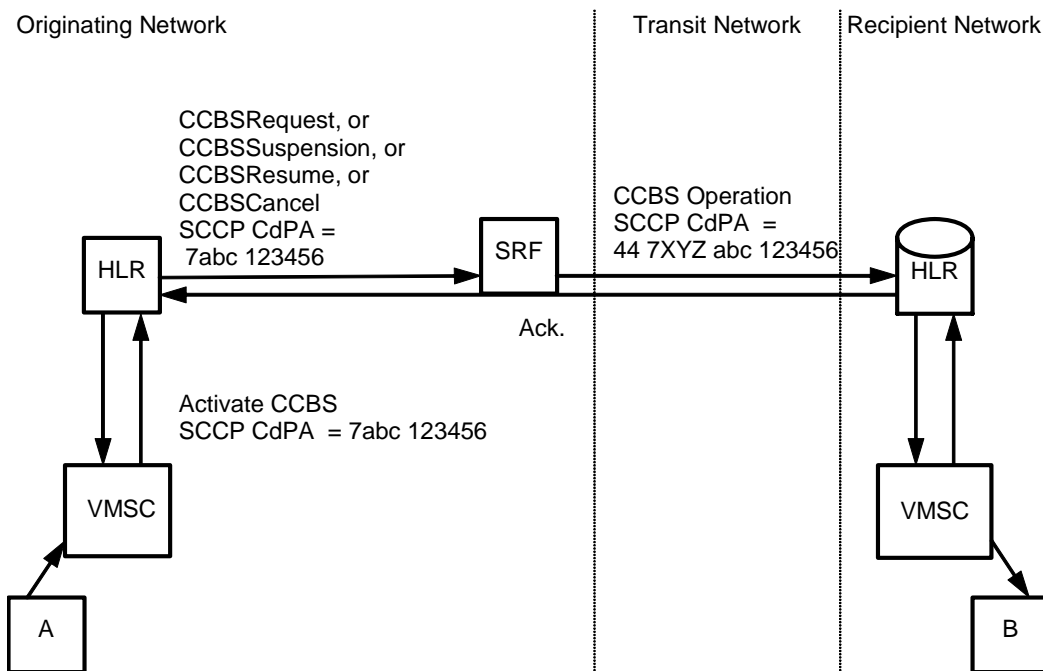


Figure 18 – Activation/Suspension/Resume/Cancel CCBS on ported subscriber – direct routing

7.8 Send IMSI

In order to illustrate the most complex scenario conceivable, the originating network shown below is a VPLMN for the subscriber who has ported from Range holding to recipient networks. (ie. the ported subscriber has roamed onto a foreign network).

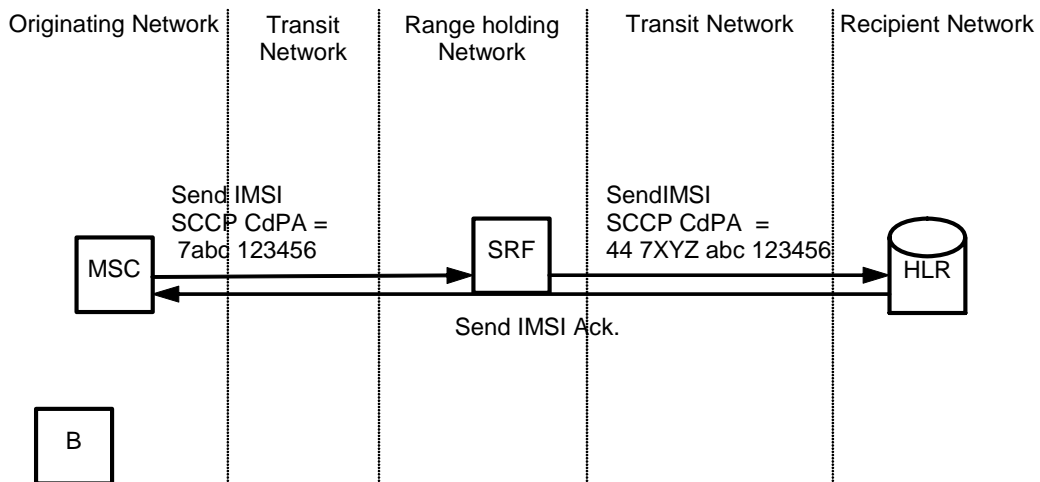


Figure 19 – Send IMSI via range holder

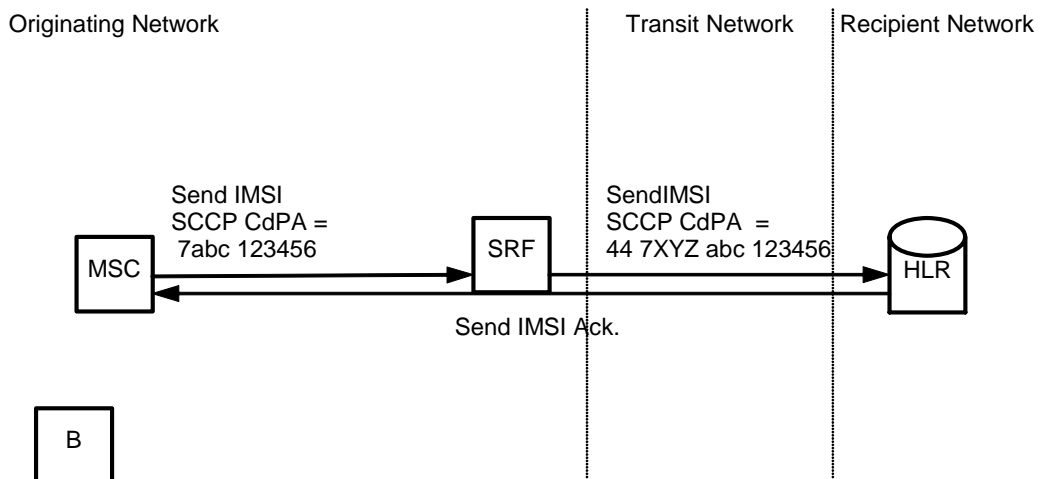


Figure 20 – Send IMSI directly routed

8 Service Interactions

In general, services based on circuit switched calls are under the control of the Recipient network because calls to ported subscribers are routed to the Recipient network.

8.1 Line identity presentation services

The ported number shall be stored in the location registers of the Recipient network. In this way the ported number is provided as the line identity of the subscriber during mobile originated calls.

8.2 Emergency calls

When a mobile originated emergency call is made by a ported subscriber, the Recipient network shall provide the emergency authorities with sufficient information to identify the serving network's identity.

8.3 CAMEL

The CAMEL Any Time Interrogation Request operation will be routed on MSISDN and is therefore applicable for relaying by the SRF in the Range Holding Network as described in Table 6.2.1.a in Section 6.2.1. Alternatively if Direct routing has been implemented as in reference [4] the message shall be routed to the SRF of the Interrogating network and forwarded to the Recipient network using the IRN as the GT of the SCCP message.

8.4 Echo cancellers

Range holding networks are not obliged to provide echo cancellers, but if they do they must support the normal echo canceller control protocols.

9 Call Trap

Call Trap is the ability of a Recipient network to 'trap' calls to numbers which have been ported into the recipient network and which originated in the recipient network. This avoids routing of the call to the Range holding network and then back to the recipient (originating) network.

Call Trap can apply to both circuit-related calls and non-circuit related signalling (e.g. SMS messages, CCBS messages).

Call Trap is a matter entirely for the Recipient network and its implementation, although beneficial is not mandatory until the regulations in reference [4] are implemented in which case Call Trap effectively becomes Mandatory.

10 Error Handling

10.1 MTP/SCCP/TC errors

With MNP in use MTP/SCCP/TC errors will be passed across UK interconnects. The handling of these errors is described in the relevant ITU-T and UK NICC specifications. There are no additional requirements for the handling of these errors placed on UK operators by MNP.

10.2 Unsuccessful call completion or application errors

As circuit switched calls to ported subscribers are routed to the Recipient network, any announcements and tones generated as a result of call/service failure, call forwarding etc will be generated by the Recipient network. No further action is needed for MNP.

History

Document history		
<Version>	<Date>	<Milestone>
Issue 1	March 2000	Editorial changes to conform with BSI format Note: Published with the document number PNO-ISC/SER/008
Issue 2	June 2005	Editorial changes, Addition of new PLMN IRNs, Addition of Direct routeing method options; modification of figures 11, 12, & 13 to use 'gateway' rather than GMSC, and use STP rather than MSC; new 3.3.3. Addition of new section 3.4. Modified 4.5 to allow IRN's to be used as well as MSISDNs for SRI enquires to donor operators; modified 3.4 table
Issue 3	February 2007	Editorial changes for the new MRC ranges allocated by Ofcom for the new mobile voice providers.
Issue 1.4.1	April 2008	Changes to incorporate the OFCOM requirement to handle traffic without using the Range Holder. Removal of recipient DROF functionality. Note : As this incorporates new NICC template, Section numbers changed